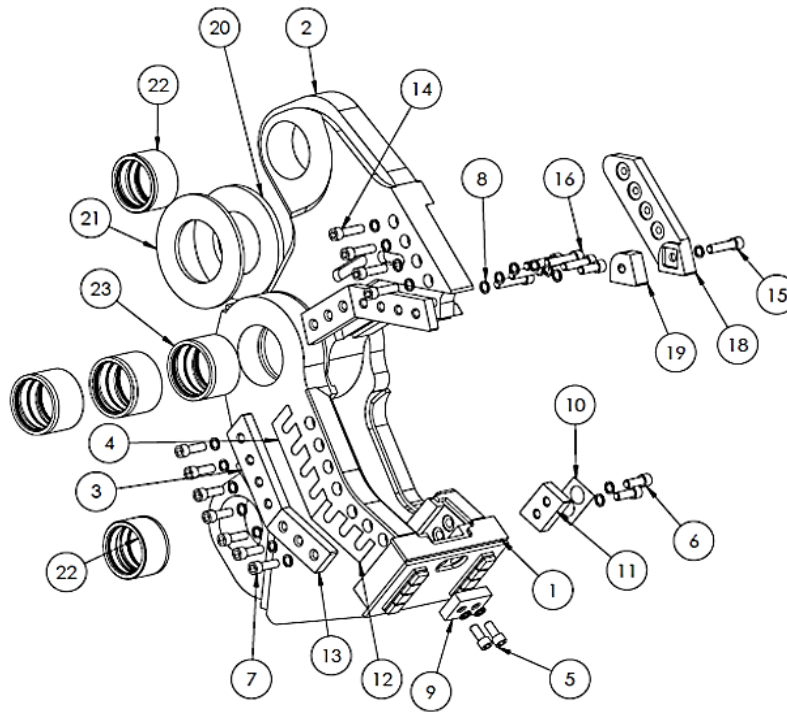
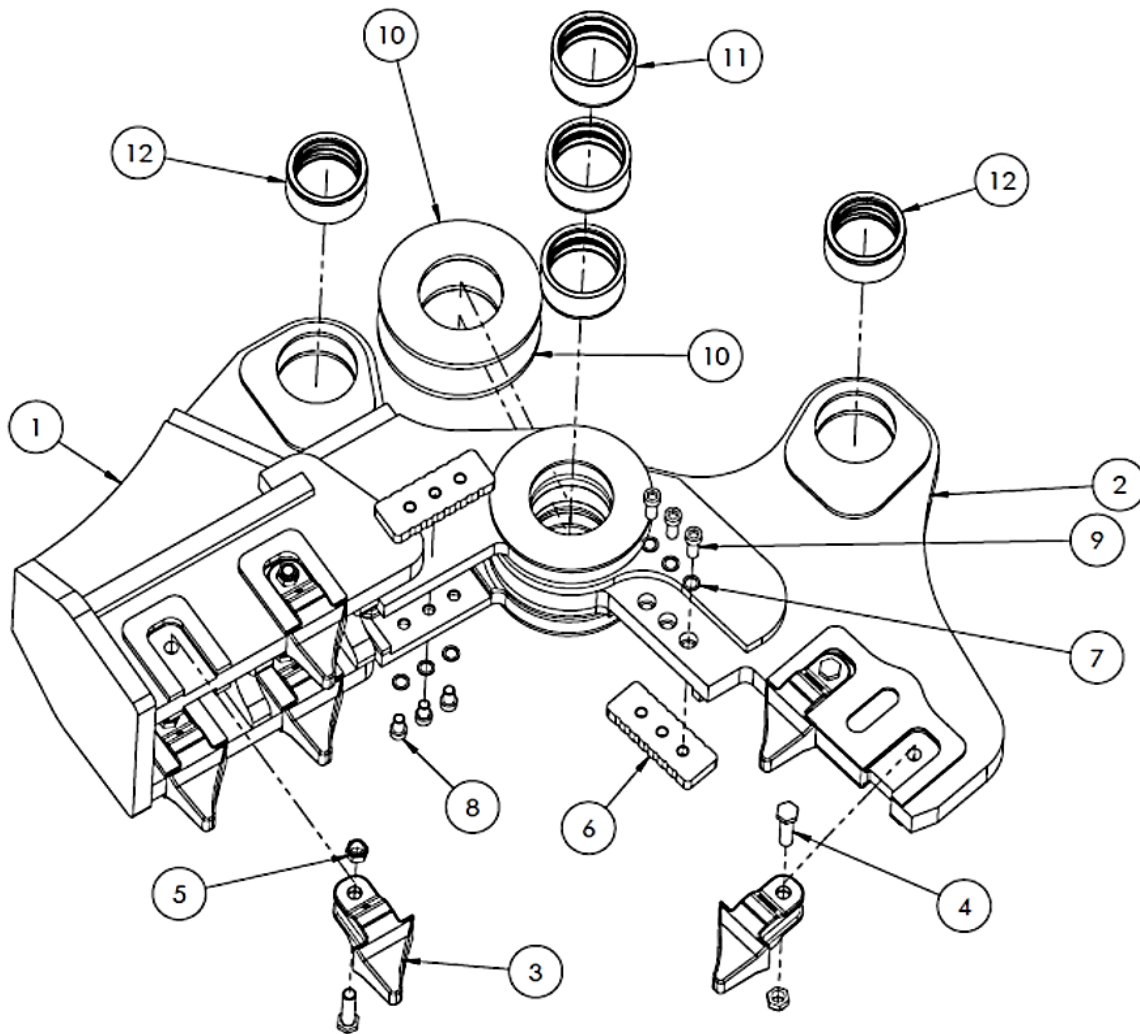


MC30 SHEAR KIT EXPLODED VIEW



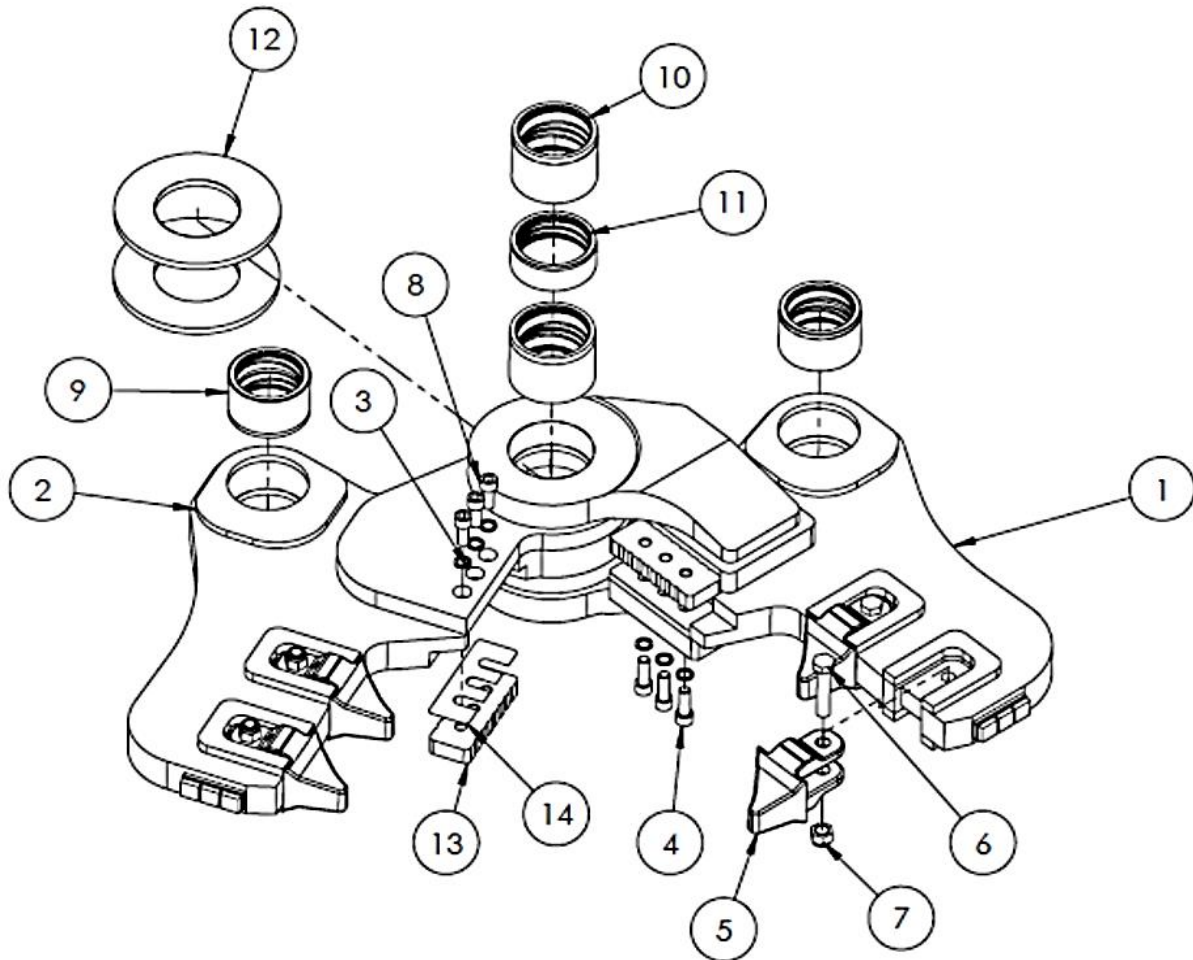
POS.	Q,TY	PART No.	DESCRIPTION
-	1	200003700	SHEAR KIT
1	1	41004500	JAW
2	1	23006000	NIPPER
3	2	21000500	BLADE
4	1	21000500_D_0.5	SHIM
5	2	04004800	TCEI M20X45
6	3	04004900	TCEI M20X55
7	7	04008600	TCEI M20X65
8	22	05001400	NORD-LOCK M20
9	1	21000700	FRONT BLADE
10	1	21001600_D_0.5	SHORT BLADE SHIM
11	1	21001600	GUIDE BLADE
12	1	21001700_D_0.5	BLADE SHIM
13	2	21001700	BLADE
14	5	04004000	TCEI M20X80
15	1	04009400	TCEI M20X85
16	4	04009500	TCEI M20X95
17	4	05004000	WASHER
18	1	22000200	PEAK
19	1	22000201	PEAK CORE
20	1	35004300	SPACER
21	1	35004200	SPACER
22	2	17001501	BUSH
23	3	17001400	BUSH

MC30 PULVERIZER KIT EXPLODED VIEW



POS.	Q,TY	PART No.	DESCRIPTION
-	1	200004000	PULVERIZER KIT
1	1	41004800	JAW
2	1	23008500	NIPPER
3	6	40000500	TOOTH OSA TYPE 2
4	6	04001100	TE M24X120
5	6	07000300	LOCKNUT M24
6	2	21001500	BLADE
7	6	05001400	NORD-LOCK M20
8	3	04004800	TCEI M20X45
9	3	04003900	TCEI M20X70
10	2	35008000	SPACER
11	3	17001900	BUSH
12	2	17000201	BUSH

MC30 CRUSHER KIT EXPLODED VIEW



POS.	Q,TY	PART No.	DESCRIPTION
-	1	200001700	CRUSHER KIT
1	1	41002000	JAW
2	1	23000800	NIPPER
3	6	05001400	NORD-LOCK M20
4	3	04000800	TCEI M20X60
5	4	40000500	TOOTH OSA TYPE 2
6	4	04001100	TE M24X120
7	4	07000300	LOCKNUT M24
8	3	04000200	TCEI M20X50
9	2	17000201	BUSH
10	2	17001300	BUSH
11	1	17001400	BUSH
12	2	35006600	SPACER
13	2	21001500	BLADE
14	2	21001500_D_0.6	BLADE SPACER